

The image shows three young women walking down a wide, modern staircase. The woman on the left is wearing a red long-sleeved shirt and blue jeans. The woman in the middle is wearing a black top, a brown cardigan, and blue jeans. The woman on the right is wearing a blue denim jacket over a patterned top and dark pants. The staircase has grey steps and a wooden handrail. The background features a wall with horizontal wooden slats and a large, stylized chevron graphic. An orange text box is overlaid on the right side of the image.

+ Higher-Education
and Science
Environments

Dream. Think. Do. Together.

We are Svigals + Partners, an award-winning architecture and art integration firm imagining a better future. We share with our clients a commitment to improving lives in education, science-tech, healthcare, and community-building. At the heart of our practice is the seamless blending of architecture, art, and storytelling designed to create experiences that nourish life. Our most successful projects emerge from close collaboration, and we hold dearly the belief all of us are smarter than any one of us.



OUR VISION:

A compassionate world inspired to create a better future together.

OUR MISSION:

To design artful solutions with passion and purpose, enriched by meaningful collaboration.

“Our Svigals project is our **Crown Jewel**”

2023 **Fast Company Innovation by Design Award** Finalist | Learning Category
2022 **CREW CT Social Impact Award**



2021 **Chicago Athenaeum American Architecture Award**
2021 **Interior Design Magazine Best of Year Award**
2021 **AIA CT Design Award** ... *to name just a few*

1983 ESTABLISHED
85% REPEAT CLIENTS
75+ INDUSTRY AWARDS

03 LOCATIONS
CT, DC, FL
LICENSED IN
12 STATES

**WORLD'S TOP 10
MOST INNOVATIVE
COMPANIES IN ARCHITECTURE
AS NAMED BY FAST COMPANY**

CONNECTICUT CERTIFIED
SMALL BUSINESS ENTERPRISE

2021 Recipient of the Greater
New Haven Chamber of Commerce
**Equity & Inclusive
Opportunity Award**

PARTNERS

Jay Brotman, AIA
Bob Skolozdra, AIA, LEED AP
Chris Bockstael, AIA
Doug Lovegren, AIA

28 STAFF MEMBERS

12 LICENSED ARCHITECTS

03 LEED AP CERTIFIED

02 WELL AP CERTIFIED

03 NCIDQ CERTIFIED
INTERIOR DESIGNERS

Civic-Cultural + Education + Healthcare
+ Mixed-Use/Residential + Science-Technology + Workplace

Our Team

Svigals + Partners nurtures a creative, collaborative spirit. We believe in multi-functional teams working together to support shared knowledge, problem solving, learning, and risk taking. Ours is an open environment where people feel valued, heard, and connected to a larger purpose -- resulting in greater creativity and innovation.

We believe this team culture works in harmony with individuals developing chosen areas of expertise. As such, we have committed leaders for sustainability, technology, quality control, graphic design, and equity/diversity, among other disciplines.

Together, we form a whole. We practice gratitude and respect. We value asking over telling. Wondering over knowing. Let us share our experience with you creating the community to which we all aspire.



Jay Brotman, AIA
Managing Partner



Bob Skolozdra, AIA, LEED AP
Partner



Chris Bockstael, AIA
Partner



Alana Konefal, AIA
Associate Principal



Brian Stancavage, AIA, CDT
Associate Principal



Marissa Mead, AIA, LEED AP
Associate Principal,
Director of Art Integration



Katherine Berger, NCIDQ, Well AP
Associate Principal,
Director of Interior Design

Our Process

Svigals + Partners was founded to create environments where life is nourished by the experience of the architecture.

Our process aims to cultivate a collective sense of purpose. We begin by asking animating questions to understand your vision, mission, and experience -- from which priorities emerge. Sometimes this engagement process is a small, select group. Sometimes it's expansive, including a wide array of stakeholders. Our process is adaptable and customized to your uniqueness.

Immersed in what we've heard and seen, we begin to design. Always through the lens of opportunity, we look for sharp edges that need smoothing and solutions that need more thinking. We repeatedly ask ourselves how can the design better serve the person, the organization, and the world? Led by aims and aspirations, we pursue a meaningful contribution to the unique nature of each place and each community.

Unique to our process is the integration of architecture, art, and storytelling. Art has always been an essential part of human culture, and experiencing art calls us to the humanity we share. By incorporating art into architecture, we create a resonance that binds community together, inspiring all to be their best selves.



Our Impact

Our clients are passionate about improving lives.

They are educators training tomorrow's leaders, biotech firms seeking cures, healthcare providers caring for old and young, and civic, cultural, corporate, and non-profit organizations serving communities.

Our client's mission is our mission, and we strive every day to create a better future together.



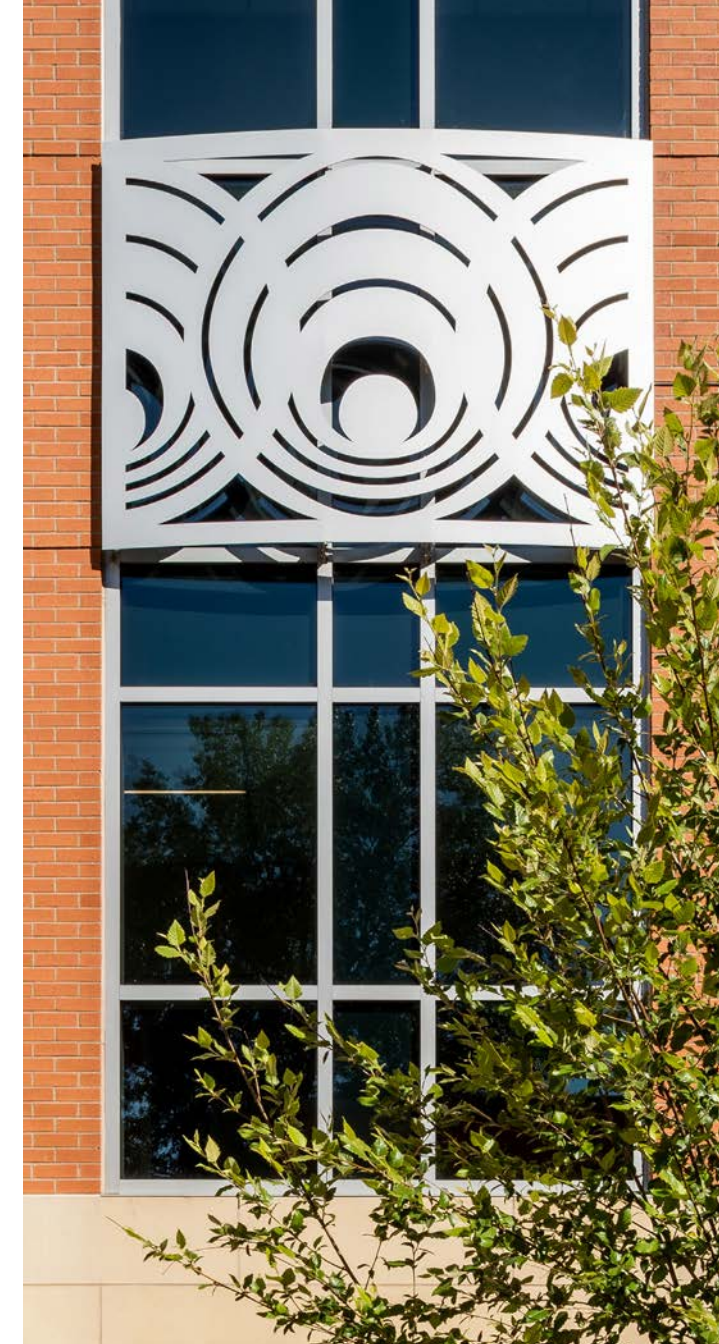




Southern Connecticut State University College of Health & Human Services

Serving as the new heart of SCSU's Health & Human Services program, the building consolidates eight campus-wide locations encompassing nearly two-dozen disciplines, uniting their academic centers, clinics, and institutes into one inviting, interdisciplinary experience.

With the central purpose of the facility to be a "teaching clinic", the design includes office and administration spaces, a nursing simulation learning center, nursing classrooms and teaching labs, clinical spaces, recreational therapy spaces, exercise science labs, and departmental space for several areas of study, such as communications disorders, marriage and family therapy, recreation, tourism and sports management, public health, social work, and exercise science.





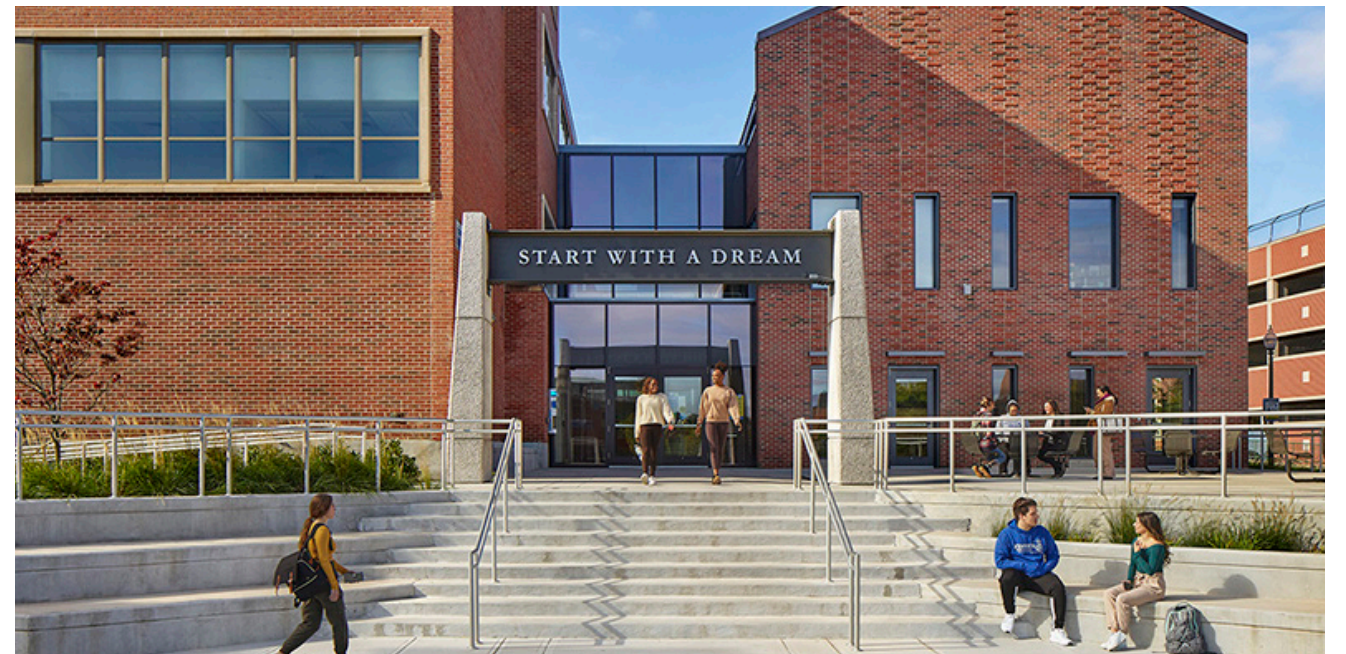


Central Connecticut State University Barnard Hall

Barnard Hall serves as the heart of CCSU's School of Education and Professional Studies. Delivering a 10,000 SF glazed and brick addition along with significant improvements to the existing 1950's structure, the upgraded facility stands proud along the main circulation spine across campus.

Consisting of a central gathering space, flexible meeting rooms, and faculty offices, the new Barnard Hall will nurture and enliven students and faculty of the School of Education and Professional Studies programs and further allow them to feel a sense of community and pride towards their school and program. Honoring the school's legacy of excellence, interior artwork celebrates the University's mission to encourage research and outreach by featuring the words of the school's namesake, Henry Barnard, and the work of notable alumni.



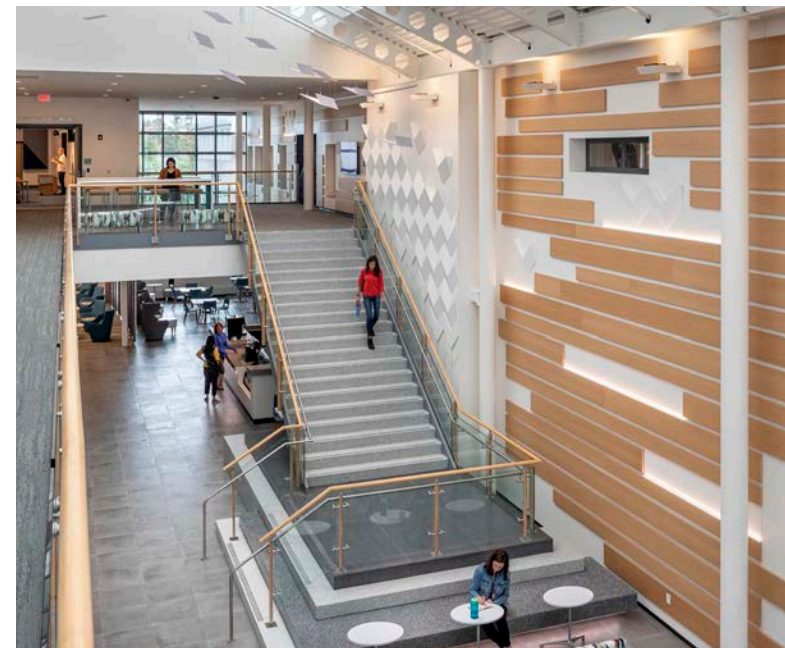


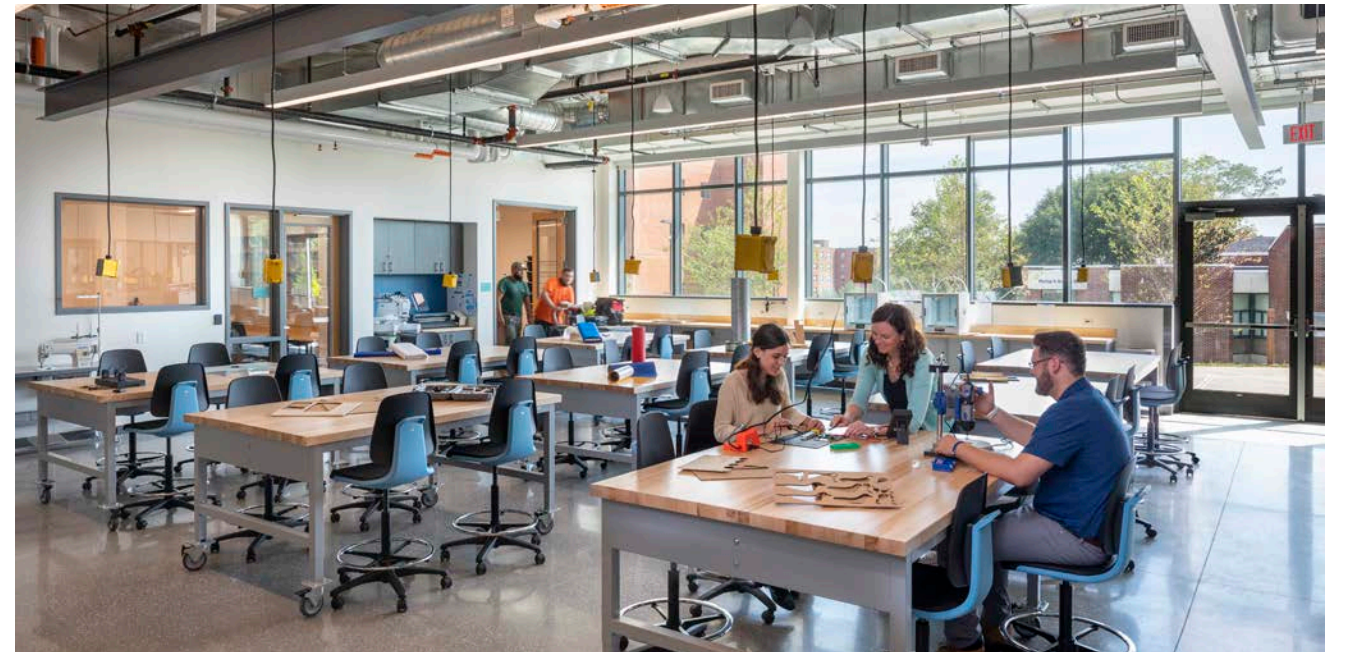


University of New Haven Bergami Center for Science, Technology, & Innovation

Situated at the newly created heart of the campus, the evocative and integrated design of the Bergami Center was designed to foster an innovative spirit throughout the University community by inviting students across all majors to collaborate, conceive, and create.

The Bergami Center features technology-supported collaborative classrooms, a professional video production studio, a makerspace, and an esports classroom and tournament venue. One of the finest learning facilities in the country, the Bergami Center embodies the University's commitment to preparing the next generation of leaders and problem solvers in careers of the future.







Albertus Magnus College Tagliatela Academic Center for Science, Art & Technology

Building upon and enhancing existing campus resources, the new Tagliatela Academic Center knits the campus together while providing much needed program space. Providing classrooms and laboratory spaces for chemistry, biology, technology, art and education, the multi-disciplinary purpose of this building brings together the full spectrum of academic inquiry. The progressive scale and rhythm of the facility's massing help weave together two previously disconnected sections of the campus.







University of Connecticut Agriculture Bio-Science Complex

A home for collaborative and interdisciplinary research, the 76,000 SF Bio-Science Complex features teaching laboratories, research facilities, offices, and advanced greenhouses. Working with departments which had historically been separated, the very process of program development began the collaborative integration across departmental lines. The design created multiple opportunities for collaborative interaction in the natural flow of the architecture from strategically located meeting areas to glass stair towers which brought researchers together while experientially connecting them to the campus as a whole. Images of trees imbedded in the brick façade express the underlying relationship to the natural work of all the research at the Complex.

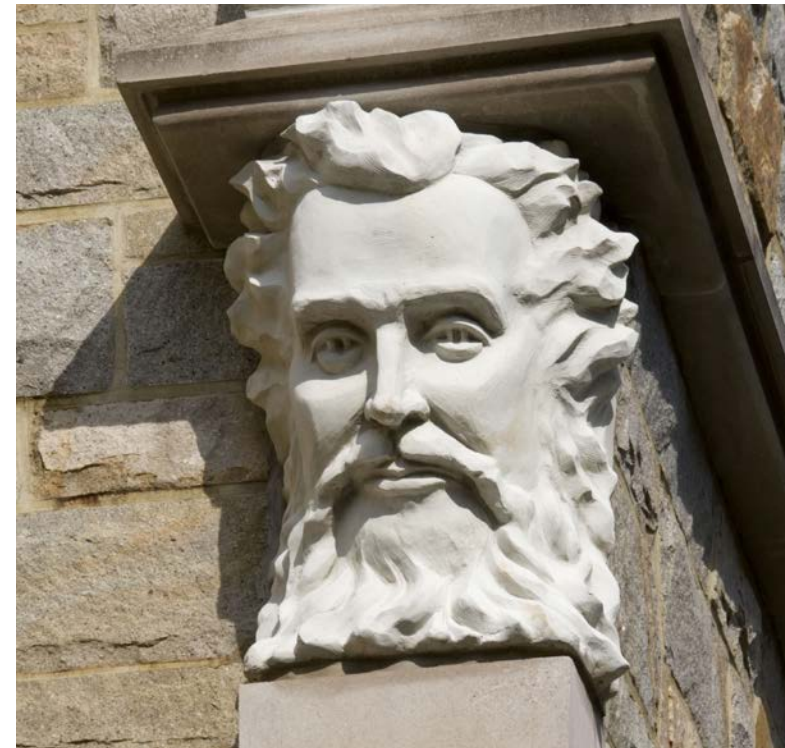




Boston College Carroll School of Management

Drawing upon the quality of nearby older architecture, the transformation of Fulton Hall brought a more modest building back into the family of the proximate buildings. In this way, the image of the whole campus was re-imagined.

The design of the new additions created an atrium which provided a heart to inspire the relationships among disparate departments which had previously been segregated, bringing new life and collaboration to all their existing programs.





Norwalk Community College Schwab Center for Information Technology

The Schwab Center for Information Technology at Norwalk Community College enhances the old Technical College while linking across a road to the newer academic building, a powerful architectural collaboration created a whole campus from disparate parts.

The Center features computer classrooms, internet teaching laboratories, and videoconferencing rooms for distance learning. An atrium provides a public space for students and faculty to congregate, fostering a sense of community among the commuter students. It also provides access to computer connections and contains a variety of seating configurations to provide spaces where people can meet and share information. Sculpted faces of prominent contributors to the field of communication - from Demosthenes to Alan Turing - have been put into relief on the walls of the atrium.

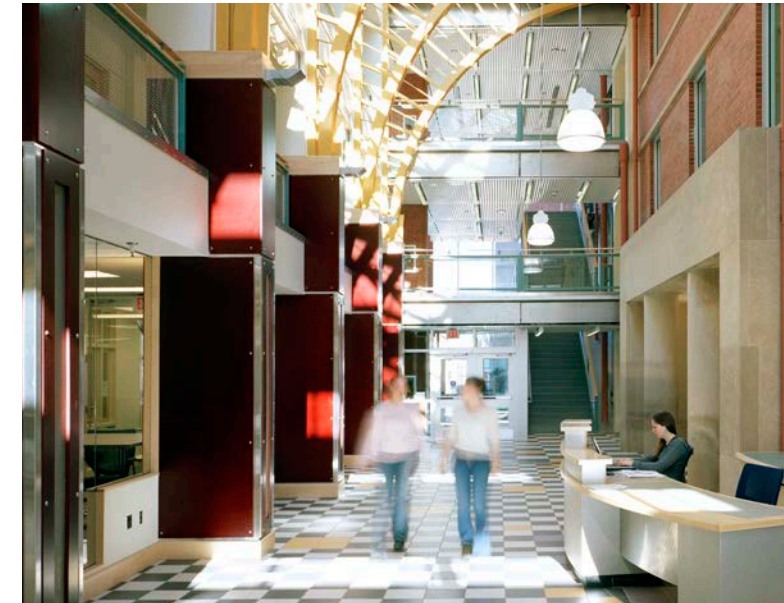




University of Connecticut John W. Rowe Center for Undergraduate Education

Located in the heart of the campus, the Center for Undergraduate Education brings together all the support services for students, from tutoring to career counseling. A light filled atrium connects the full spectrum of services offered and fosters interaction between students and faculty. The exterior features sculptural reliefs comprised of figures interwoven with the 12 letters found in the University's name, forming inspirational words and phrases chosen by the inhabitants of the buildings stretching across the two facades.

Now a vibrant hub, the CUE can reach more students, more effectively than ever before. It embodies the mission of the University community to care for every student throughout their academic career.

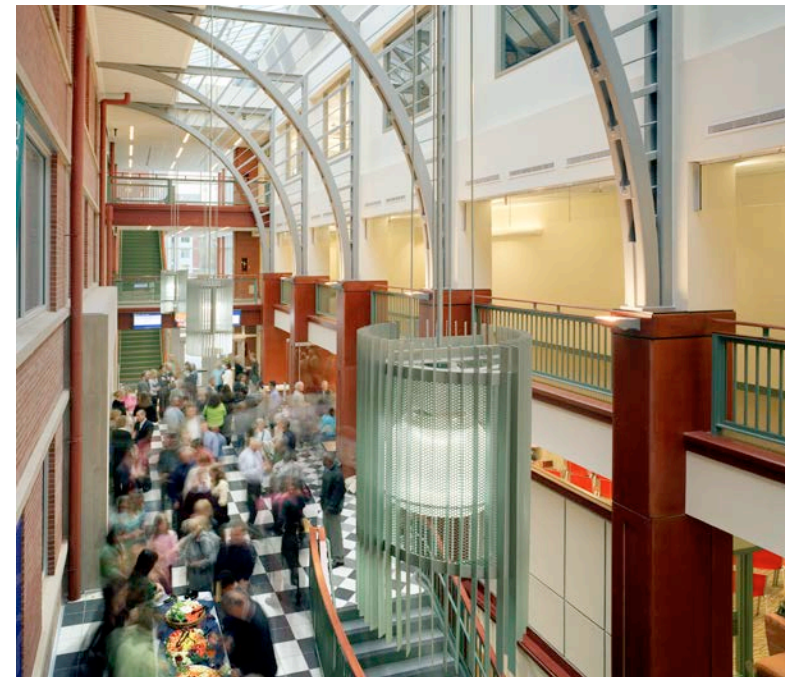




University of Connecticut Neag School of Education, Gentry Hall

Statewide, this school has become the center of study and research for education, with conferences, joint programs, and education outreach. Within the University, it offers a place where the entire academic community passes through and gathers.

Designed to nurture a community of active learners, the space offers a spectrum of places for creative engagement from the atrium to intimate retreats. The interior activity spaces are located on the ground floor and open onto the Academic Way, seamlessly connecting indoor and outdoor activities.





Quinnipiac University Center for Communications and Engineering

Aligning the space with Quinnipiac University's forward-thinking approach, the inviting and technologically advanced renovated spaces showcase student accomplishments and become a highlight of tours for visitors and prospective students. Svigals + Partners transformed key spaces, including a three-story atrium, studying, and socializing zones, huddle rooms, classrooms and a computer lab into modern and enjoyable learning and interaction areas that will support their studies, teamwork and future careers.



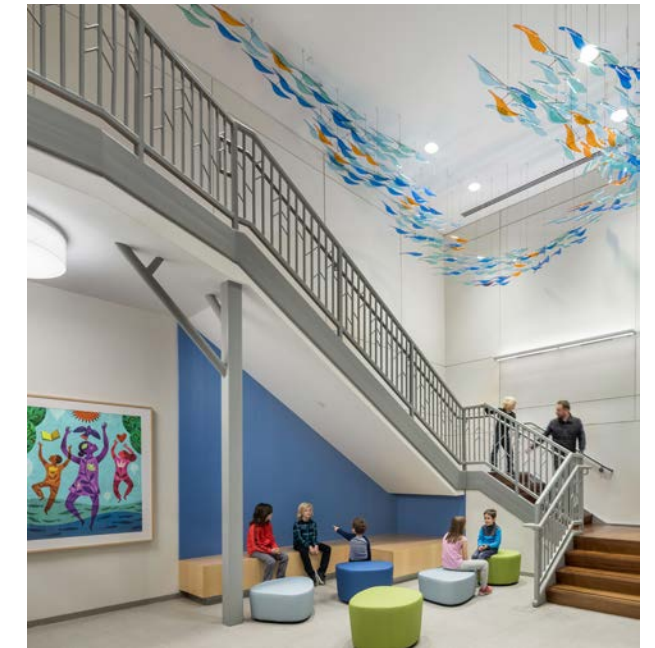


Yale University School of Medicine: Child Study Center

Internationally recognized Yale Child Study Center needed a new centralized space to serve as a home for outpatient, behavioral health treatment and study. Previously located in three separate locations, bringing all the services under one roof was a challenge. Programming workshops played a vital role in determining the team's holistic vision which was to create a biophilic atmosphere for staff, caregivers, and children while prioritizing patient privacy.

Features of the space include 80-plus clinical offices, reception areas, smaller themed, waiting rooms, wayfinding/orientation, conference rooms, private offices, workstations, huddle room, and a large breakroom.

This building is not only more user friendly for patients and their families, but it successfully creates a supportive research and work environment that promotes collaboration and cross-pollination of ideas.





Yale West Campus Integrated Science-Technology Center

Part of multiple projects aimed at transforming the Bayer Pharmaceutical campus into a leading Yale University Research Center, the Yale West Campus Integrated Science and Technology Center (WISTC) becomes a collaborative facility where allied disciplines come together for innovative research. Beyond blending old and new, a key to making the lab spaces work was providing flexible solutions for the many unknowns of scientific research.

With a sensitivity to the unique research being performed as well as the connection to the University, branding elements incorporated into the design provided individual identity while remembering the greater academic community.





Yale School of Medicine Administration

Through our continued relationship with Yale University, Svigals + Partners revived a former AT&T building into Yale School of Medicine's new administrative facility serving 500 staff members. This LEED Silver project had an extremely fast design, documentation, and construction schedule despite the challenges of bringing multiple departments under the same roof for the first time. An extensive programming study was required to understand each department's needs, work processes, and requirements. In combination with our already strong understanding of YSM's standards and properties, the findings were woven together to create a new, open work pedagogy intended to inform all of Yale's work environments for years to come.





Fairfield University Residence Hall

Given growing enrollment demands and over-crowding, Fairfield University had the opportunity to build a new residence hall and renovate four existing halls achieve their goal of:

- Enhancing student experiences
- Strengthening sense of place
- Providing new, inviting lounge areas where students can congregate and interact

The new residence hall provides a focal point for the freshman “neighborhood”. Like its sister buildings, it is a four-story brick-clad building with notable design departures: the student lounge becomes an architectural feature as a single-story protrusion with an upper story that shifts off the main floor supported by a column colonnade. At night, the three-story glass curtain wall will shine like a beacon across the campus.





Confidential Ivy League University: Engineering Quad Laboratories

This project included the alteration and renovation of several rooms to create four separate and distinct laboratories for four faculty members. Developing the design program for each laboratory as independent and parallel projects, each laboratory scope had input from each of the four Associate Professors, the Electrical and Computer Engineering Department, a representative from the School of Engineering and Applied Science, and a University Project Manager.

Options were presented for evaluation and analysis by each faculty member and other representatives separately while achieving the primary goals of design efficiency with flexibility related to possible future conversions and additions.



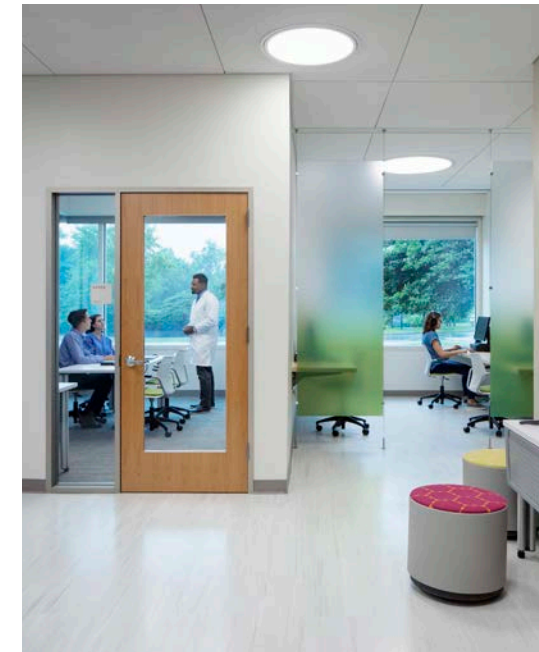




Yale University School of Nursing Simulation Lab

The Simulation Center Expansion is an innovative enhancement to the University's existing simulation program. The center now includes a standardized patient lab with digital capture and playback, and a home care lab that doubles as a psychiatric simulation lab.

As a result of the careful considerations and attention to the campus' integrity, the design team was able to create a high fidelity standardized patient area, allowing students the opportunity to be as close as they can to real world experience while still being in an educational setting that allows for close observation and critique.





Yale University School of Medicine, West Campus Imaging Core

An innovative research laboratory, the Imaging Core at Yale houses a collection of shared microscopes and sample preparation resources to support on-going research. This core facility is shared by seven institutes in Yale's West Campus.

Rooms were strategically designed in the basement of a facility to reduce daylight and control vibration that could have a negative impact on the research being performed. This state-of-the-art facility is designed with plus/minus .5 degrees Celsius of temperature uniformity and performs to class 100 clean room level.

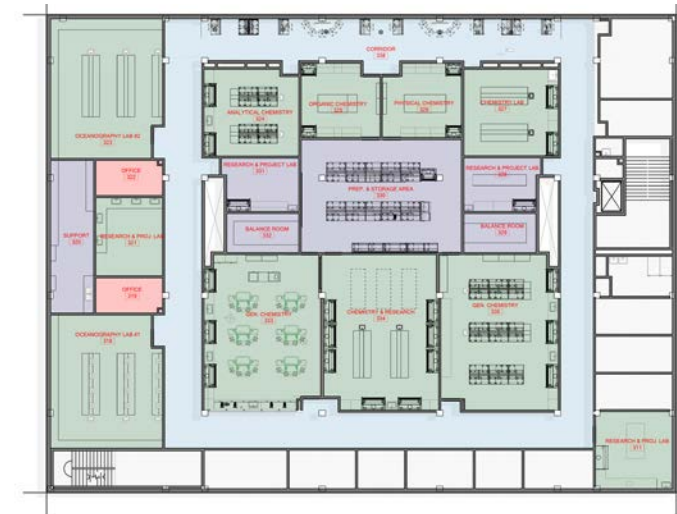




US Coast Guard Academy Hood Replacement and Teaching Lab Floor Renovation Study

Technical lab renovations coupled with the addition of breakout spaces serve to enhance the learning experience for students of the US Coast Guard Academy.

This phased renovation project consists of a hood replacement, lab casework replacement, and finishes for the third floor teaching labs of the U.S. Coast Guard Academy Science Building. Additional collaborative graduate student workspace was included in the project scope – providing dedicated work and study space outside of the labs. Upgrades to the academic teaching labs, prep space and grad student work areas will put science on display and increase flexibility for lab setup and turnover.





S+P Higher-Education Experience

Colleges + Universities

Albertus Magnus College

Aquinas Hall Renovation/Addition
Tagliatela Hall Renovation/Addition

Boston College

Caroll Hall School of Management Renovation/Addition

Central Connecticut State University

Barnard Hall Renovation/Addition

Eastern Connecticut State University

Student Center Renovation/Addition

Fairfield University

Freshman Quad Hall Renovations
Service for Justice Residential Hall New Construction

New York Medical College

Pharmacology Department Renovation

Norwalk Community College

Schwab Center for Info Technology Renovation/Addition

Princeton University

Moffett Vivarium Renovation

Southern Connecticut State University

Health & Human Services Building New

University of Connecticut *(continuing services since 1994)*

Beach Hall Renovation
Bioscience Complex New Construction
Brain Imaging Research Center Renovations
Ecology & Evolutionary Biology Greenhouse Renovations
Gentry Building & CUE Renovation/Addition
Health Center Clinical Building Renovations
Master Plan 2000 & UCONN 21st Century Renovation/
Addition

University of Hartford

New Residence Hall Programming

University of New Haven

Bergami Center for Science, Technology & Innovation New
Construction
Graduate Campus Renovations

Yale University *(continuing services since 1994)*

Department of Geology & Geophysics, Clean Laboratory
Renovations
Marsh Botanical Gardens Greenhouse I, II & Head House
Renovation/Addition
School of Medicine B, C & I Wings Renovations
School of Medicine Butterfly Laboratory Renovations
School of Medicine Child Study Center Renovations
School of Medicine E.S. Harkness Memorial Hall Renovations
School of Medicine LEPH Renovations
School of Medicine LSOG Renovations
School of Medicine WISTC Laboratory Renovations
School of Nursing Simulation Center Expansion
School of Public Health New Classrooms & Student Lounge
Renovation

Clients Are Saying

“**BEYOND** my expectations.”

“I’m **THRILLED** with the design.”

“Svigals has **NO COMPETITION**
in terms of *creativity and collaboration*.”

“The process of **COLLABORATION** was outstanding.”

“Our Svigals project is our crown jewel.”

“Svigals cares about the
project, the client, and
meeting client needs.
That shows.”

“Not your typical
architect. **NOTHING**
COOKIE-CUTTER.”

“**NO CLASHING**
which has
happened with other
architectural firms.”

“**FANTASTIC IN REACHING CONSENSUS**”

“Just the right amount of weird.”

“All architects think about the end-user first, but
Svigals **THINKS OF THE CLIENTS** too.”





SVIGALS + PARTNERS

84 Orange Street
New Haven, CT 06510

203.786.5110
svigals.com

4075 Wilson Boulevard, 8th Floor
Arlington, VA 22203

202.870.4550

100 SE 3rd Avenue, Suite 1000
Fort Lauderdale, FL 33394

954.498.3826